



The Richmond Record – August 2020



Youth Sports

Fall soccer registration for children born between 2006 and 2015 is now available online at northernutahunited.com. You can also register at the Richmond City offices during regular business hours. Soccer leagues are following all recommendations for safety from local governments and will continue to monitor the situation to allow kids a safe return to play.

If you have questions, please contact the sports committee at richmondsports@gmail.com or at (435) 932-0257.



Black & White Cattle Show is ON!

The Black & White cattle show (Western Spring National Holstein Show) is scheduled for August 31-September 4 at the George B. Caine Pavilion. The show will not have a few of the regular events due to Covid-19 considerations. The 4-H and FFA judging competition won't be held nor will the

school demonstrations. The sale will be held Wednesday night.

Come enjoy the 105th cattle show! In order to maintain social distancing, attendance will be limited to maintain social distancing protocols.

Draft Horse Pulls - Cancelled

The draft horse pulls will not be held this year due to the ongoing Covid-19 concerns.

Building in Richmond

Richmond has an entire section of the Municipal Code devoted to building requirements, design standards, zoning, setbacks for each zone, agricultural and accessory buildings (garden sheds, detached garages, pre-fab sheds, etc.), fences, and more. What was allowed in 2006 may not be allowed in 2020.

In 2011-2012, Utah's Land Use, Development, and Management Act (LUDMA) was adopted. This was a major update to the state's system of land use administration by cities and towns. The Richmond City Council and the Planning & Zoning Commission spent over a year in updating our city code to be compliant with the new requirements.

Since the new section of code (Chapter 12, Richmond Municipal Code) was adopted in 2013, changes have been made in response to requests from residents, businesses, or to comply with new state requirements.

So, why the history lesson?

A number of building permits have been submitted without all of the required information. We'd like to help you get things right the first time so building plans—whether for a home, addition, barn, garden/storage shed, moving a shipping container onto your property, putting up a carport, or adding a deck—can be reviewed and approved efficiently.

Please look at the [building permit application](#) packet on our website to see what's required. And PLEASE call the city office (258-2092) with questions *before* you start digging or building. Part of the trade-off of choosing to live in a city is exchanging some of your personal property rights for the community building code requirements.

The Utah Office of the Property Rights Ombudsman provides a [simplified summary](#) of LUDMA.

Property Tax

A public hearing will be held on August 25th at 7:30 pm on holding the certified tax rate at the same level as it was in fiscal years 2018-2019 and 2019-2020.

If the rate is not held, then both old and new property (homes & businesses) would be paying a slightly lower rate each year.

Holding the tax rate the same is considered a tax increase by state code thus the notice of a proposed tax increase. However, if you look at your 2020 notice of property valuation and tax change, you'll see you'll be paying the same amount in property tax as you did in 2018 and 2019 if your valuation didn't change.

Confused?

The reason the city council has chosen to keep the rate the same from year to year is so we can keep up with inflation and maintain or improve the services we offer to the residents: roads, parks, fire and emergency services, and so much more.

UDOT Weather Station

So, what's that new pole and solar panel stuff just north of Lower's? UDOT installed a new road weather station in late June. This is part of their RWIS (Road Weather Information System) that is found throughout the state. You can find current weather and road condition data for any station.

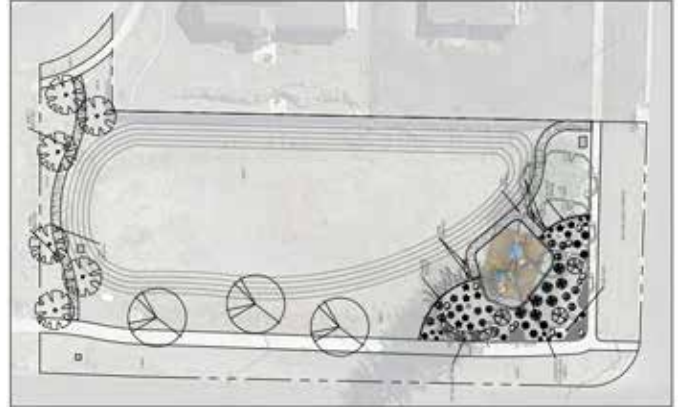


To view the weather stations, go to UDOTtraffic.utah.gov and click on Road Weather.

Click the tab "Show Cameras", click on the camera icon, and the weather information will be displayed.

White Pine Park

Richmond has started Phase 1 of a new city park located on the southwest corner of the White Pine subdivision. We received \$45,000 from the county's RAPZ (Restaurant, Art, Park, and Zoo) tax and work began in late July. Below is the site design of the park at 300 E 300 N.



ADA access is from 300 North. Trees, shrubs, park benches, sidewalks, and sod will be installed this year. The playground equipment (the pentagon-shaped area in the lower right) will be installed next year.

An old hand-dug well in the northwest corner will be preserved with a clear cover and lights to illuminate the walls of the well. We'd hoped to use boards from the huge Norwegian spruce that had to be removed to build a shelter over the well but it takes 5-6 years for them to dry!

Here are a couple of aerial photos of the work done as of July 25th.





The first phase of the park should be done by the end of August. Phase 2 will be installing the playground equipment and that happens in 2021. It'll be similar to the play area at the city park by the tennis/pickleball courts.

The Richmond Library

A citizen's door to lifelong learning



FOLLOW US ON INSTAGRAM!!!

Find out what's happening at the library by following us on Instagram...just scan this nametag on Instagram to follow richmondlibrary

Richmond Library Facebook: The library now has its own Facebook page: do a search for @richmondlibraryut within Facebook or click [this link](#).

Summer Reading 2020



Remember to turn in your Summer Reading Bingo cards by August 28th to receive your prizes!!!

 <p>RICHMOND PUBLIC LIBRARY</p> <p>435-258-5525</p> <p>richmondlibrary.us</p>	<p>HOURS</p> <p>MONDAY - FRIDAY 10:00 AM - 12:00 PM 2:00 PM - 6:00 PM</p> <p>WEDNESDAY 6:00 PM - 8:00 PM</p> <p>SATURDAY 10:00 AM - 1:00 PM</p>
--	---

We return to regular hours on Monday, August 3rd.

Early Intervention Program

We are offering FREE evaluations!

The Up To 3 Early Intervention program is a home-based service program which provides services to promote the development of children under the age of 3 with developmental delays or disabilities of various kinds. These services include Behavior services, Autism Spectrum Disorder, Nutrition, Speech and Language, Physical Therapy, Occupation Therapy, and Vision and Hearing Services. We are located in the Center for Persons with Disabilities at Utah State University.

Do you have concerns? We can help. Please contact us at (435) 797-3727 or visit our website at Upto3.org.

2020 Census Infogram

If you haven't yet responded to the 2020 Census, please do so. You can submit your response [online](#), by mail, or by phone. Each household must submit a response. The Richmond Library can provide you secure access to report online.

Your participation is vital for our city: census results are used to determine how hundreds of billions of dollars in federal funding are distributed to communities for the next ten years. Here are just a few of the impacts:

- Highway planning and construction as well as grants for public transit systems
- Funds for Head Start programs and grants that support teachers and special education
- Programs to
 - support rural areas
 - restore wildlife
 - prevent child abuse

- prepare for and mitigate the damages caused by wildfires
- National school lunch program
- Low-income home energy assistance
- Determines how many seats Utah has in the U.S. House of Representatives
- Utah receives \$5.6 billion each year from the federal government

As of July 27th, Richmond has a response rate of 75%. You can track the response rate for our city and surrounding communities by visiting the [2020 Census Response Rates](#) page.

Website: City website at <https://richmondutah.org/> for information on council meetings, public safety, resident info (utilities, licenses, permits), and much more.

Facebook: The city has an official Facebook page at www.facebook.com/richmondcityutah.

Community Response System: Richmond City can send messages via text or email to let people know of road or infrastructure work, office closings (or openings), etc. If you're interested in joining the city's community response system, please send an email to communityresponse@richmondutah.org. If you'd like information on the system, send your request to the above email address.

Newsletter Submissions

Send to terlou38@gmail.com by the 25th of each month.



1937 Black & White Days cattle show